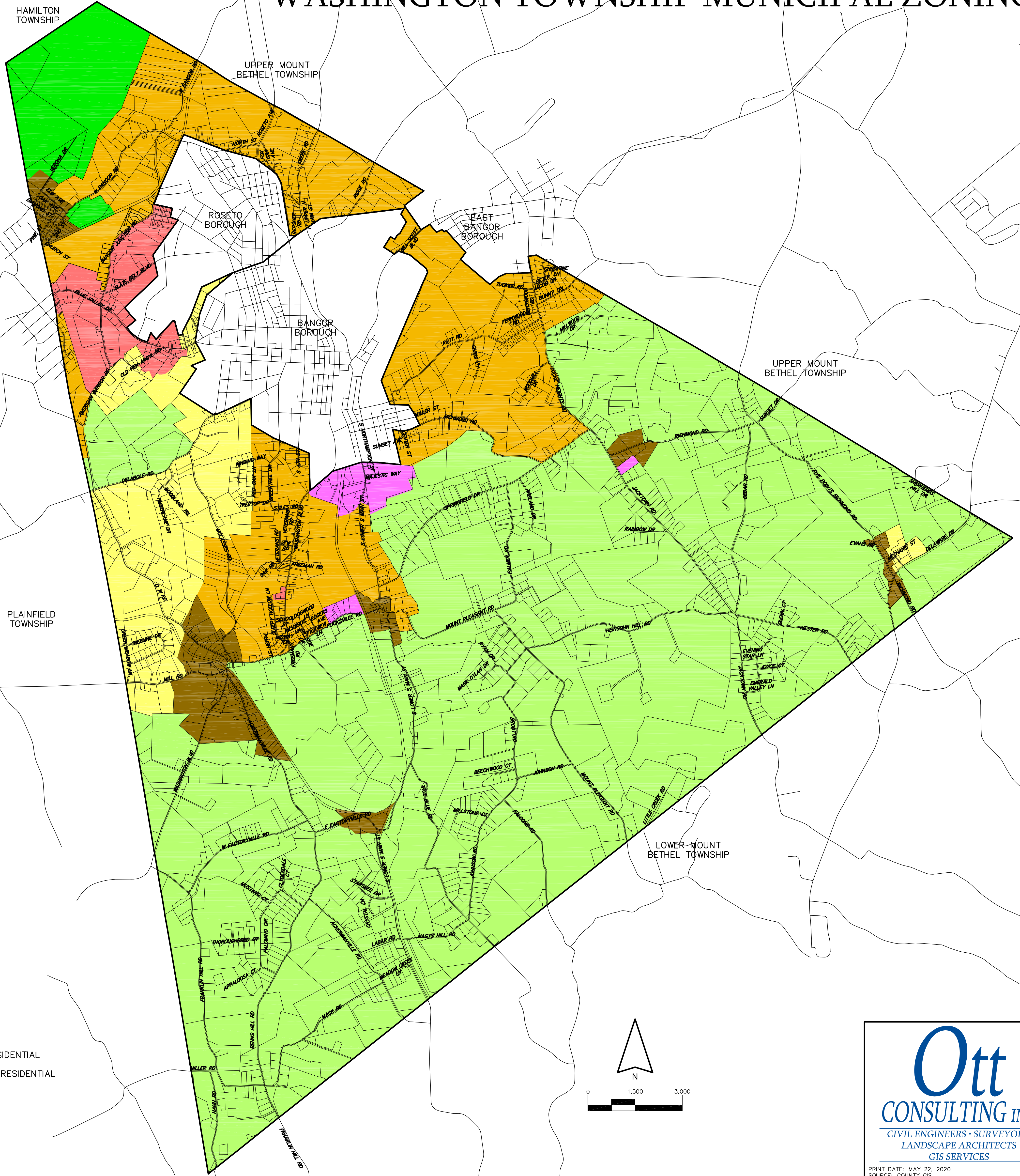
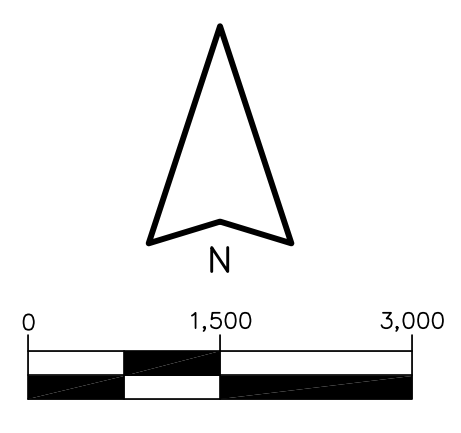


# WASHINGTON TOWNSHIP MUNICIPAL ZONING



- A AGRICULTURE
- C COMMERCIAL
- I INDUSTRIAL
- R-1 LOW DENSITY RESIDENTIAL
- R-2 MEDIUM DENSITY RESIDENTIAL
- RC RURAL CENTER
- W WATERSHED
- PARCEL BOUNDARIES
- MUNICIPAL BOUNDARY



**Ott**  
CONSULTING INC.

CIVIL ENGINEERS • SURVEYORS  
LANDSCAPE ARCHITECTS  
GIS SERVICES

PRINT DATE: MAY 22, 2020  
SOURCE: COUNTY GIS